

ENGLISH

Quarter 4 - Module 5



ENGLISH - Grade 2
Quarter 4 - Module 5 Synonyms and Antonyms
Self-Learning Module (SLM)
MATATAG Curriculum
First Edition, 2025

Republic Act 8293, section 176 states that: No copyright shall subsist in any work of the Government of the Philippines. However, prior approval of the government agency or office wherein the work is created shall be necessary for exploitation of such work for profit. Such agency or office, may among other things, impose as a condition the payment of royalties.

Borrowed materials (i.e., songs, stories, poems, pictures, photos, brand names, trademarks, etc.) included in this module are owned by their respective copyright holders. Every effort has been exerted to locate and seek permission to use these materials from their respective copyright owners. The publisher and authors do not represent nor claim ownership over them.

Development Team of the Module

Writer: **Elaiza Mae P. Gemino**
Editor: **Annie Rose T. Sacatani**
Reviewer: **Julius D. Celetaria**
Illustrator: **Sofia Blesshee A. Verano**
Layout Artist: **Joey M. Lozano**
Art Designer: **Cristy C. Narcilla**
Management Team:
Gildo G. Mosqueda, CEO VI - Schools Division Superintendent
Gilbert B. Barrera, CESE - Assistant Schools Division Superintendent
Arlene Rosa G. Arquiza - Chief ES, Curriculum Implementation Division
Ivy P. Lamintao - Education Program Supervisor, LRMS
Julius D. Celetaria - Education Program Supervisor, English
Joey M. Lozano - Information Technology Officer I
Leonora R. Po - Project Development Officer II, LRMS
Delia P. Eliarda - Librarian II

Printed in the Philippines by
Schools Division Office of Tacurong City

Office Address: Alunan Highway, Poblacion, Tacurong City 9800
Telephone Numbers: 09190656425/064-562-4880
E-mail Address: tacurong.city@deped.gov.ph

Introductory Message

This Self-Learning Module (SLM) is prepared so that you, our dear learners, can continue your studies and learn while at home. Activities, questions, directions, exercises, and discussions are clearly stated for you to understand each lesson.

Each SLM is composed of different parts. Each part shall guide you step-by-step as you discover and understand the lesson prepared for you.

A Pre-test is provided to measure your prior knowledge on lessons in each SLM. This will tell if you need to proceed on completing this module, or if you need to ask your facilitator's or your teacher's assistance for better understanding of the lesson. At the end of each module, you need to answer the post-test to self-check your learning. Answer keys are provided for each activity and test. We trust that you will be honest in using these.

In addition to the material in the main text, Notes to the Teachers are also provided to the facilitators and parents for strategies and reminders on how they can best help you on your home-based learning.

Please use this module with care. Do not put unnecessary marks on any part of this SLM. Use a separate sheet of paper in answering the exercises and tests. Read carefully the instructions before performing each task.

If you have any question about using this SLM or any difficulty in doing the tasks in this module, do not hesitate to consult your teachers or facilitator.

Thank you.

For the learner

Welcome to the English - Grade 2 Self-Learning Module (SLM) on Synonyms and Antonyms!

In this learning resource, you will have the opportunity to enjoy and successfully achieve relevant competencies at your own pace.

This module offers fun and meaningful opportunities for both guided and independent learning. You will engage with the material and become an active participant in your learning journey.

This module has the following parts and corresponding icons:



What I Need to Know

This gives you an idea of the skills or competencies you are expected to learn in the module.



What I Know

This part includes an activity that aims to check what you already know about the lesson to take. If you get all the answers correctly, you may decide to skip this part.



What's In

This is a brief drill or review to help you link the current lesson with the previous one.



What's New

In this portion, the new lesson is introduced to you in various ways such as through a story, a song, a poem, a problem opener, an activity or a situation.



What is It

This section provides a brief discussion of the lesson. This aims to help you discover and understand new concepts and skills.



What's More

This comprises activities for independent practice to concretize your understanding and skills about the topic. You may check the answers to the exercises using the Answer Key at the end of the module.



What I Have Learned

This includes questions or blank sentence/ paragraph to be filled in to process what you learned from the lesson.



What I Can Do

This section provides an activity which will help you transfer your new knowledge or skill into real life situations or events.



Assessment

This is a task which aims to evaluate your level of mastery in achieving the learning competency.



Additional Activities

In this portion, another activity is given to you to enrich your knowledge or skill of the lesson learned. It also ensures retention of learned concepts.

Answer Key

This contains answers to all activities in the module.

At the end of this module, you will also find:

References

This is a list of all sources used in developing this module.

The following are some reminders in using this module:

1. Use the module with care. Avoid unnecessary mark/s on any part of the module. Use a separate sheet of paper in answering the exercises.
2. Answer *What I Know* before moving on to the other activities included in the module.
3. Carefully read the instructions before doing each task.
4. Observe honesty and integrity in doing the tasks and in checking your answers.
5. Finish the task at hand before proceeding to the next.
6. Return this module to your teacher/facilitator once you are through with it.

If you encounter any difficulty in doing the tasks in this module, consult your teacher or facilitator. Always bear in mind that you are not alone. We hope that through this material, you will experience meaningful learning and gain a deep understanding of the relevant competencies.

For the facilitator

Welcome to the English Grade 2 Self-Learning Module on Synonyms and Antonyms!

The Curriculum Implementation Division (CID) through the Learning Resource Management Section (LRMS) launched this module in cooperation with the Division's Teacher Developers, Learning Resource Evaluators (LREs), Information and Technology Officer, and subject matter experts in Mathematics and English. This has been especially developed, quality-assured, and validated to enable you to help the learners overcome their educational obstacles—personal, social, and economic—while meeting the standards outlined in the MATATAG Curriculum.

This learning resource hopes to engage the learners in guided and independent learning activities. It further aims to help them acquire the needed 21st century skills while taking into consideration their needs and circumstances.

As a facilitator, you are expected to orient the learners on how to use this module. You also need to keep track of their progress while allowing them to manage their learning. In addition, you are enjoined to encourage and assist the learners as they do the tasks contained in the module.

ENGLISH

Quarter 4 - Module 5

Synonyms and Antonyms



What I Need to Know

Recognize that some words mean the same (synonyms) or opposite (antonyms) meaning.

After going through this module, you are expected to:

1. begin to see that some words mean the same (synonyms);
2. recognize that some words have opposite meaning (antonyms);
3. identify words with similar meaning; and
4. identify words with opposite meaning.

Lesson 1 - Synonyms



What I Know

Write the synonym of the underlined word in each sentence.

1. The room is clean. (dirty, neat)
2. Maria is an intelligent girl. (smart, industrious)
3. The kids are playing at the park. (children, guest)
4. Dina's mother is sick. (healthy, ill)
5. Mark will carry his bag. (bring, drop)



What's In

Write the letter of the correct word that has the same meaning as the given word.

1. beautiful
a. ugly b. pretty c. brave d. cold
2. short
a. tall b. high c. fast d. low
3. rich
a. poor b. wealthy c. start d. end

4. pretty

a. lovely

b. kind

c. back

d. quick

5. woman

a. boy

b. man

c. lady

d. young



What's New

Study each picture and read the sentences about it.

1. Robert is a good-looking man.

He has an attractive face.

Isn't he handsome?



2. Mae got the correct answers.

Her answers are accurate.

She got it right.





What is It

Look at the underlined words in each number above. The words good-looking, attractive, handsome almost mean the same thing. Correct, accurate, right also have the same meaning. They are called **synonyms**.

Synonyms are words with the same meaning.

Let us study the next set of sentences.

1. Mom sees a fat bat. It is chubby.



2. Ben is sickly. He is weak.



When we say fat, it is the same as chubby.

When we say sickly, it is the same as weak.

Question: What does the same mean?

Answer: The same means similar.

Words with similar meaning are called **synonyms**.

Here are some more examples of synonyms.

Synonyms
present – gift
go – move
scared – afraid
cheerful – happy
huge – big
kind – caring
brave – courageous
say – tell
good - great
difficult - hard



What's More

Give the synonym of each underlined word that describes the picture. Select your answer from the words inside the box.

caring

big

intelligent

cheerful

fat

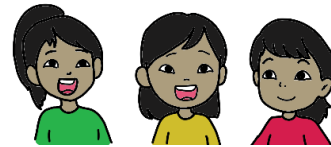
1. I saw a huge house.

I saw a _____ house.



2. Some girls were jolly.

They were _____.



3. The carabao is stout.

The carabao is _____.



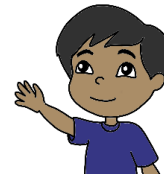
4. Mia is a smart kid.

Mia is _____.



5. Ray is kind.

Ray is _____.



What I have learned

Synonyms - are words that have the same meaning.



What I can do

Match the words that mean the same under each column. Write the letter of the correct answer.

Column A

___1. quick

___2. small

___3. big

___4. ill

___5. true

Column B

a. correct

b. sick

c. tiny

d. fast

e. huge



Assessment

Choose the synonym of the underlined word from the choices given. Write the letter of the correct answer.

1. Joy wears clean dress.

a. neat

b. dirty

c. clear

d. untidy

2. Roy is very calm.

a. happy

b. noisy

c. sweet

d. peaceful

3. Mae has a long hair.

a. lengthy

b. short

c. black

d. tall

4. Fernando Amorsolo is one of the most famous painters.

a. brave

c. courageous

b. fast

d. well-known

5. The door is open.

a. close

c. unlocked

b. out

d. back



Additional Activities

Write the synonym of the following words.

Synonym

1. happy

2. hot

3. young

4. small

5. rich

Lesson 2 – Antonyms



What I Know

Write the antonym of the underlined word in each sentence.

1. The books are heavy. (thin, light)
2. Roni saw a large box. (small, big)
3. There was an empty sack under the table. (little, full)
4. Ana sleeps early. (late, advance)
5. Eat your breakfast before going to school.
(after, above)



What's In

Write the letter of the correct word that has the opposite meaning as the given word.

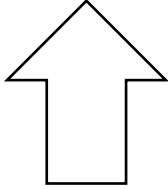
1. fast
a. quick b. slow c. stop d. go
2. last
a. first b. glad c. below d. middle
3. left
a. above b. up c. down d. right
4. cool
a. snowy b. dry c. warm d. wet
5. easy
a. clear b. difficult c. basic d. soft



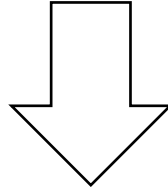
What's New

Study each picture and read the word about it.

1.

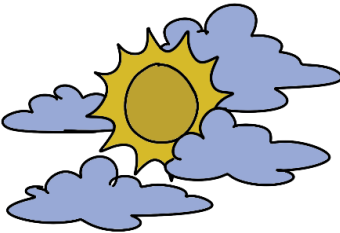


up

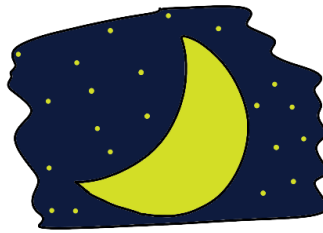


down

2.



day



night



What is It

Look at the words from the previous page. The words up and down have different meaning. Day and night also have an opposite meaning. They are called **antonyms**.

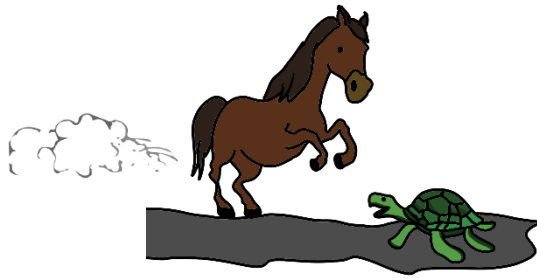
Antonyms are words with the opposite meaning.

Let us study the next set of sentences. Try to differentiate the two pictures.

1. The rock is hard. The cotton is soft.



2. The horse runs fast. The turtle moves slow.



When we say hard, it is the opposite of soft.

When we say fast, it is the opposite of slow.

Question: What does opposite mean?

Answer: Opposite is the reverse or completely different from another thing.

Words with opposite meaning are called **antonyms**.

Here are some more antonyms.

Antonyms
start – stop
strong – weak
left – right
fat – thin
hot – cold
difficult – easy
noisy – quiet
brave – coward
old – new
in – out



What's More

Choose the opposite of the word inside the parentheses from the words inside the box.

lazy	opened	attacked	correct	dark
------	--------	----------	---------	------

1. It was a (light) _____ and rainy night.
2. He is a very (industrious) _____ person.
3. The eagle (defended) _____ the prey.
4. I (closed) _____ the boxes.
5. Shella got the (wrong) _____ answer.



What I have learned

Antonyms - are words that have opposite meanings.



What I can do

Match the words that have an opposite meaning under each column. Write the letter of the correct answer.

Column A

- ___1. in
- ___2. hot
- ___3. begin
- ___4. true
- ___5. dry

Column B

- a. cold
- b. false
- c. wet
- d. end
- e. out



Assessment

Give the antonym of the underlined word in each sentence. Write the letter of the correct answer.

1. Fe's bag is new.
a. clean b. young c. old d. black
2. The boy climbed up the ladder.
a. left b. down c. around d. above
3. Roma was quiet during the movie.
a. happy b. scared c. silent d. loud

4. The car runs fast.

a. slow

b. new

c. old

d. quick

5. The toy was broken.

a. fixed

b. day

c. brave

d. end



Additional Activities

Write the antonym of the following words.

Antonym

1. thick

2. hot

3. young

4. small

5. rich

Answer Key

Lesson 1

Additional Activities Answers may vary	Assessment 1. a 2. d 3. a 4. d 5. c	What I can do 1. d 2. c 3. e 4. b 5. a	What's More 1. big 2. cheerful 3. fat 4. intelligent 5. caring	What's In 1. b 2. d 3. b 4. a 5. c	What I Know 1. neat 2. smart 3. children 4. ill 5. bring
---	--	---	---	---	---

Lesson 2

Additional Activities Answers may vary	Assessment 1. c 2. b 3. d 4. a 5. a	What I can do 1. e 2. a 3. d 4. b 5. c	What's More 1. dark 2. lazy 3. attacked 4. opened 5. correct	What's In 1. b 2. a 3. d 4. c 5. b	What I Know 1. light 2. small 3. full 4. late 5. after
---	--	---	---	---	---

References

Lahoylahoy, Judy M. 2020. "English 2: Quarter 3 - Module 3-Synonyms and Antonyms." Self-Learning Module (SLM). Regional Center, Brgy. Carpenter Hill, City of Koronadal: Department of Education - SOCCSKSARGEN Region.

Rubio, Leeroi Christian Q. 2021. "English 2 - Quarter 3." PIVOT 4-A Learner's Material. Department of Education Region IV-A CALABARZON.

DISCLAIMER

This Self-learning Module (SLM) in **ENGLISH 2 Quarter 4 Module 5** titled "**Synonyms and Antonyms**" was developed by SDO TACURONG with the primary objective of preparing for and addressing the demands of the MATATAG Curriculum. Contents of this module were based on DepEd's Learning Competencies anchored on the MATATAG Curriculum. This is a supplementary material to be used by all learners of Tacurong City in all public schools beginning SY 2024-2025. The process of LR development was observed in the production of this module. This is version **1.0**. We highly encourage feedback, comments, and recommendations.

For inquiries or feedback, please write or call:

**Schools Division Office of Tacurong City
Learning Resource Management Section (LRMS)**

Alunan Highway, Poblacion, Tacurong City 9800
Telephone Numbers: 09190656425/064-562-4880
Email Address: tacurong.city@deped.gov.ph